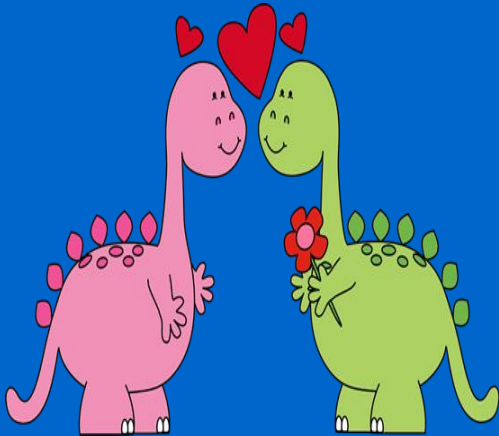


Little Minds Campuses

February 2021 Newsletter

Important Dates

Valentine's Day Spirit Week



Monday, February 10th : Show your love for comfort! Wear your comfy sweats or favorite winter pajamas.

Tuesday, February 11th : Show your love for Valentine's Day! Wear red, white, and pink.

Wednesday, February 12th : Show your love for teachers! Gift a flower, draw a picture or make a sweet note. We will also have our Valentine's Day party.

Thursday, February 13th : Show your love for family! Bring family picture to share during circle time.

***Monday, February 15th- Closed for Presidents' Day**

Dear Parents,

Although February is the shortest month of the year we have so much going on! It is the international month of friendship which we will honor with discussions, stories, and encouragement on how to show love to friends. We have a week-long of celebration planned for Valentine's Day and encourage you to bring valentine's day cards for your child to share with their classmates. We ask as a reminder that you do not put names of individual children on the card, it would be great if your child could sign the card and have a few extra that way no child feels left out. If you are interested in bringing something for our celebration or you would like to help out please let our teachers know this week.



THIS MONTH'S LEARNING, DISCUSSIONS AND ACTIVITIES

LETTERS: Tt, Uu, Vv, Ww

NUMBERS: 1-40 Review

COLOR: Pink, Lavender

SHAPE: Heart

-This month we will be discussing all about Valentine's Day, pets, helping others and presidents.

Friendly Reminders:

- Children over the age of two are required to wear masks.
- Tuition is due every Friday for the following week of service. If tuition is not received by Friday the account will be charged a late fee of \$40.
- Children with colds, sore throats, temperatures, and diarrhea should be kept at home.
- Please be sure your child has a blanket and fitted sheet for the nap period and that your child has an extra set of clothes at school at all times.
- All children must be signed in and out on a daily basis.